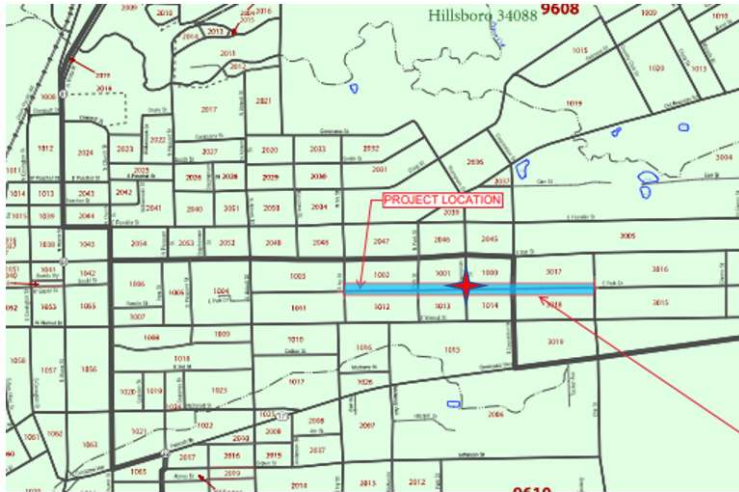


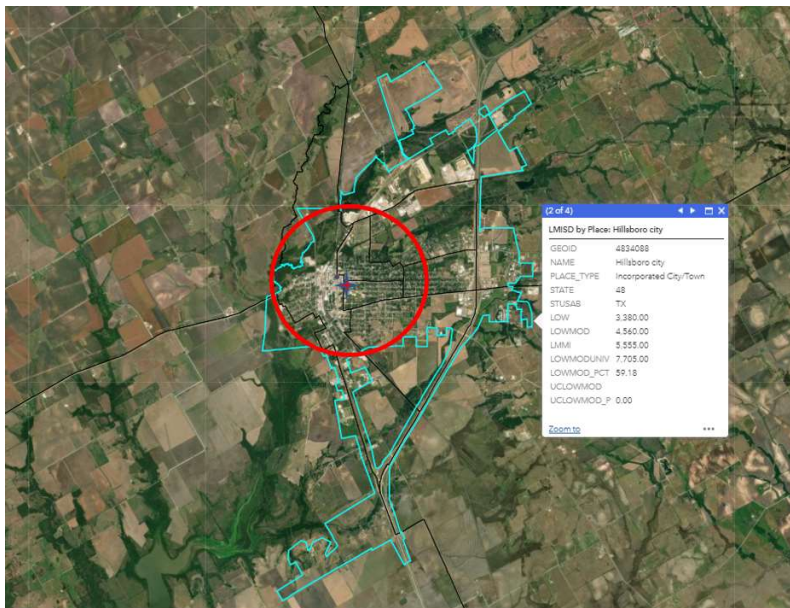
Sample Section 3 Service Area

Example 1 – Project located within Hillsboro, Texas – the Hillsboro city limits are indicated in teal on the map below.

Step 1: Identify the mid point of the project site – the water line project location on the map below is marked in blue, and the midpoint is indicated with a red cross.



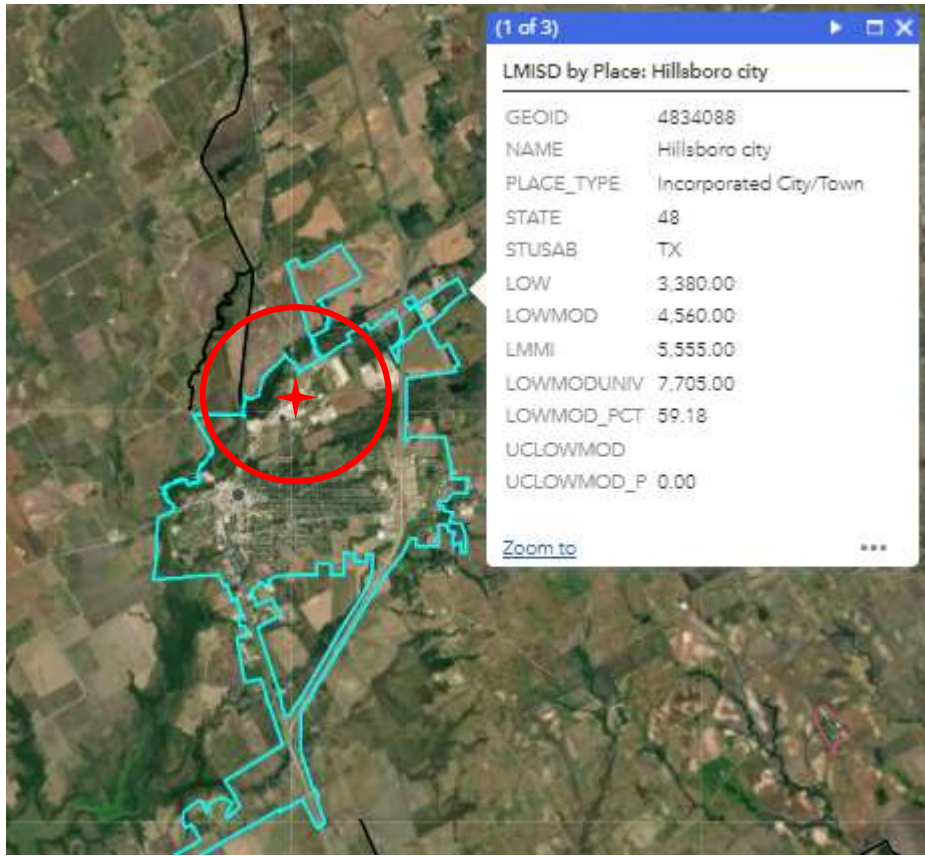
Identify a circle around the center of the project site with a radius of 1 mile. In the example below, the red circle marks the area within one mile of the point marked by the red cross.



In this example, the population of Hillsboro is reported by LMISD data as 7,705 persons, most of which reside within the identified circle. Since the population within one mile of the project site exceeds 5,000 persons, the Section 3 Service Area is defined by the red one-mile circle.

For Service Areas like this, please include an explanatory statement with your map, such as “The City has determined that it is reasonable to assume that a minimum of 5,000 persons reside in this service area, based on the documented population of the census geography and an understanding of the City’s residential development pattern.

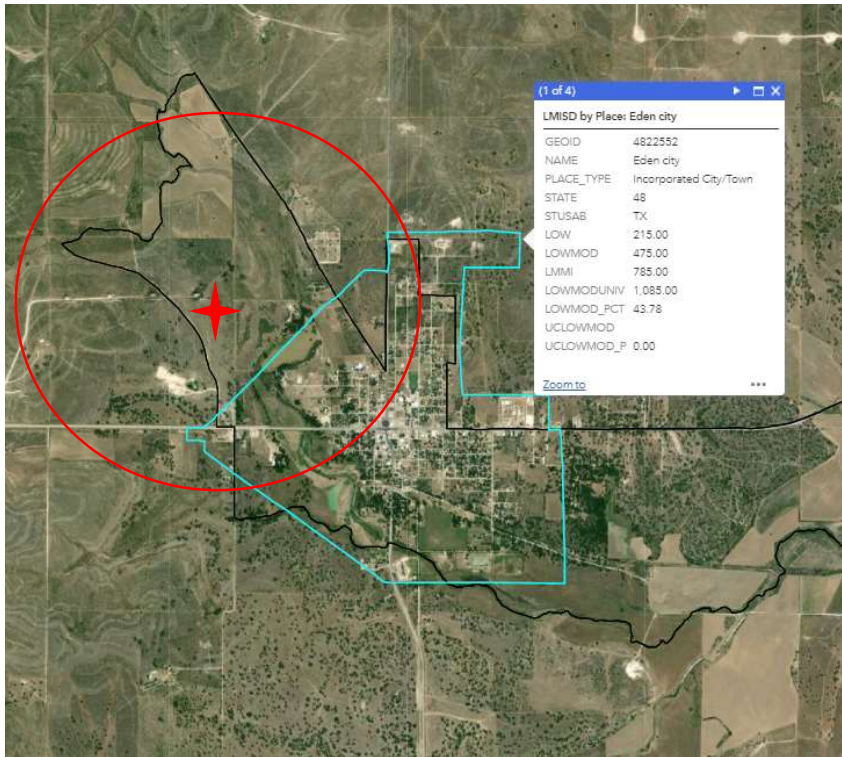
Example 1b – Project also in Hillsboro, but different location (further north than Example 1).



In this example, the population of Hillsboro is reported by LMISD data is 7,705 persons – however, it is not reasonable to conclude based on observation that most of the city’s population resides within the identified 1 mile circle around the project site. The circle surrounds mostly empty space and the residential streets are concentrated south of the circled area. The Grant Recipient cannot rely on this step alone to identify the Section 3 Service Area. See Example 2 for next steps.

Example 2 – Project located northwest of Eden, Texas – the Eden City limits are indicated in teal on the map below.

Step 1: identify the midpoint of the project site and create a circle around the center of the project site with a radius of 1 mile:



In this example, the city limits for the “place” are indicated in blue, and the project is marked with the red cross. The red circle marks the area within one mile of the project site. The Population within the circle is clearly less than 5,000 persons, so continue to Step 2.

Step 2 – aggregate census block group geographies totaling a minimum of 5,000 persons that both

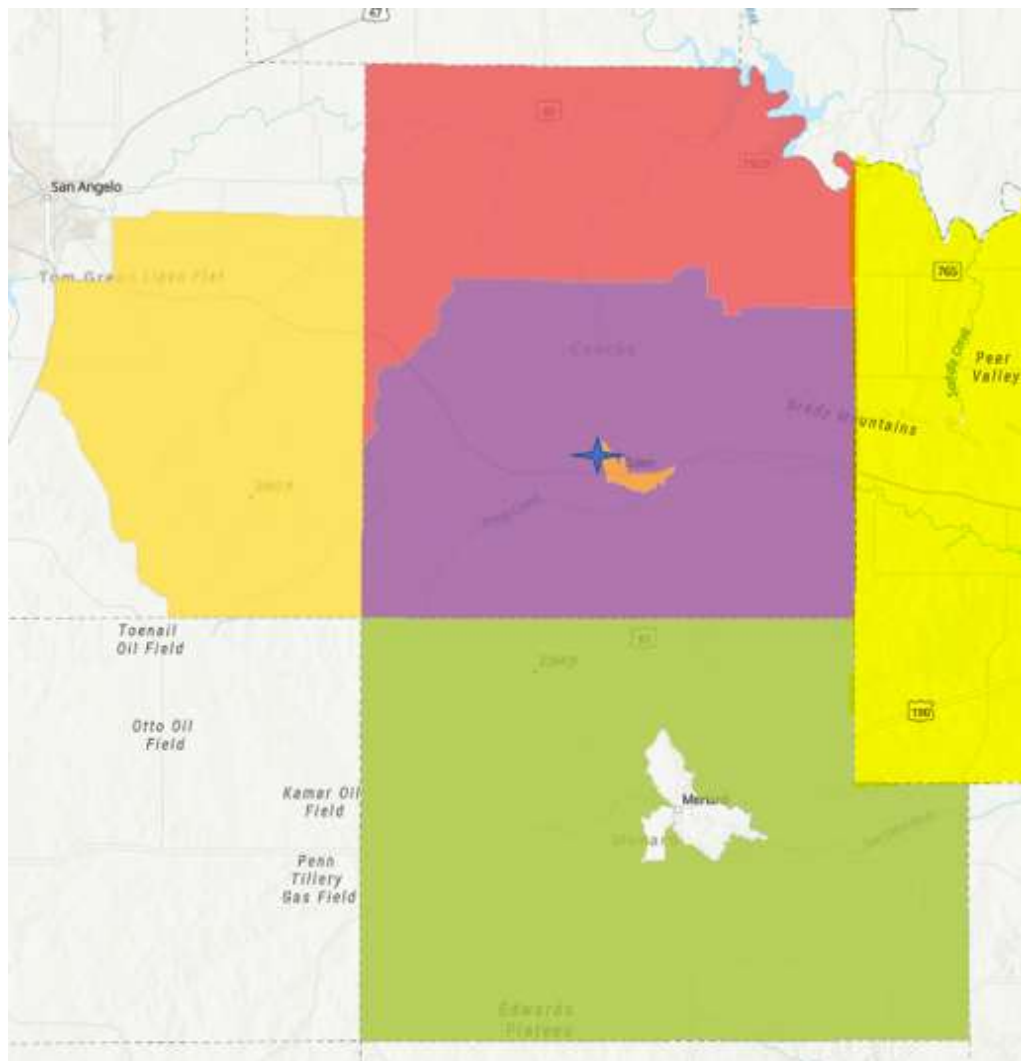
- surrounds all components of a Project Site, AND
- most closely approximates a circle shape.

At this time, no HUD tools have been provided to assist with this process. If the Grant Recipient or its service providers do not have other available tools, TDA recommends using the LMISD Mapping Application, normally used to identify beneficiary populations, to visually identify block groups to be included.

[Low- and Moderate-Income Summary Data, based on 2011-2015 ACS - Overview \(arcgis.com\)](https://arcgis.com)

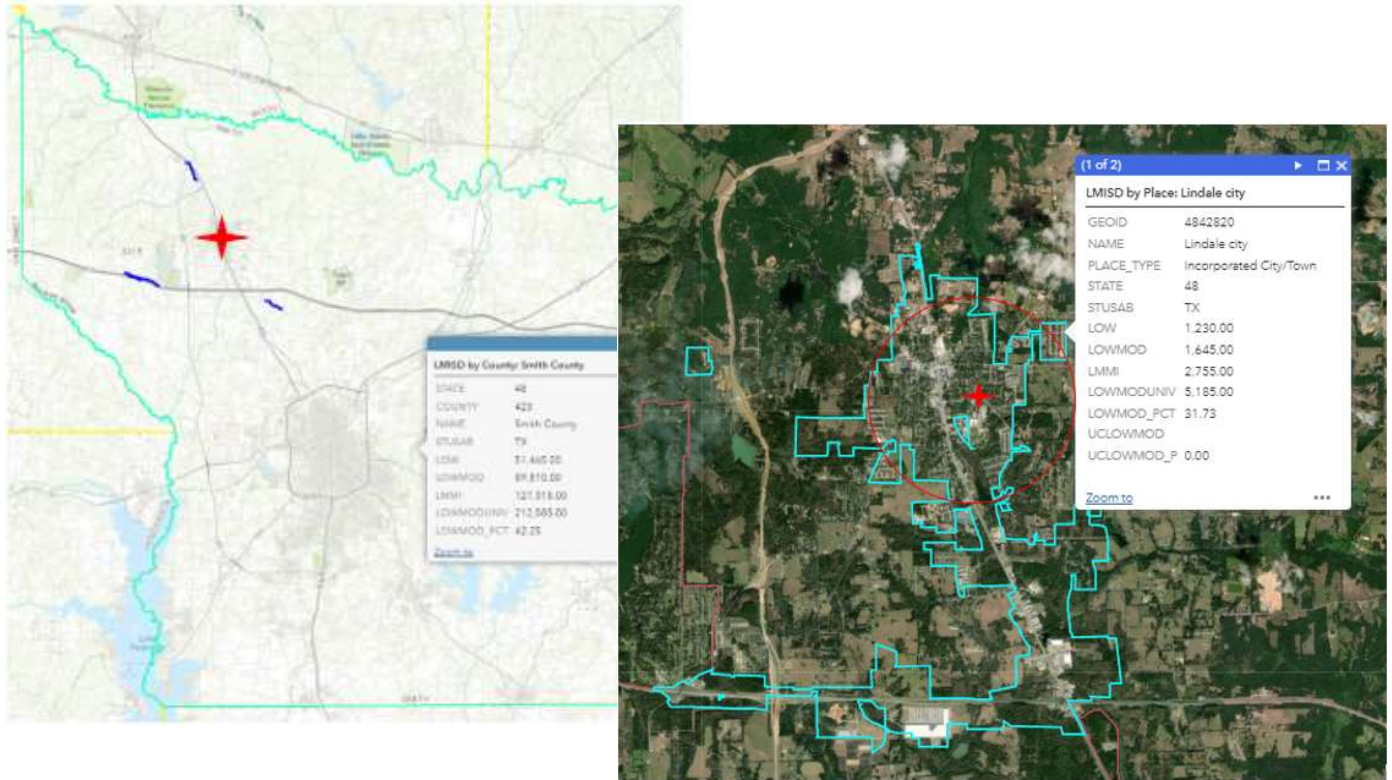
In this example the following Block Groups make up the “circle”:

Census Block Group	LOWMODUNIV
Concho County (all BG)	2685
McCulloch Co Block Group 1	655
Menard Co Block Group 1	465
Tom Green Co Block Group 4	1330
Total Population	5135



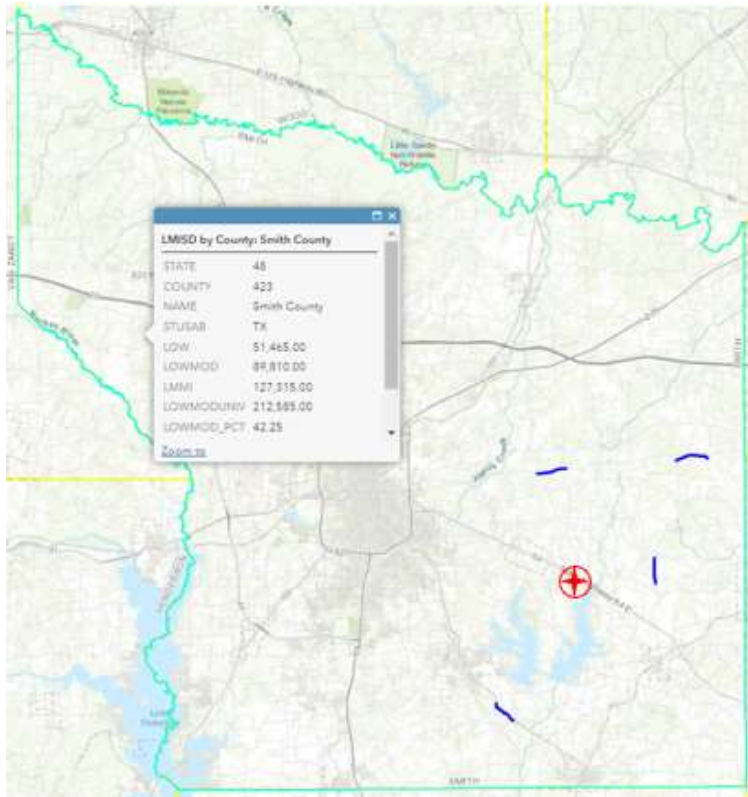
Example 3 – Project with multiple locations throughout Smith County – the Smith County boundaries are indicated in teal on the map below.

Step 1: identify the midpoint of the project site and create a circle around the center of the project site with a radius of 1 mile. In this case, the circle does not encompass all project locations, but the 1 mile population must still be evaluated.



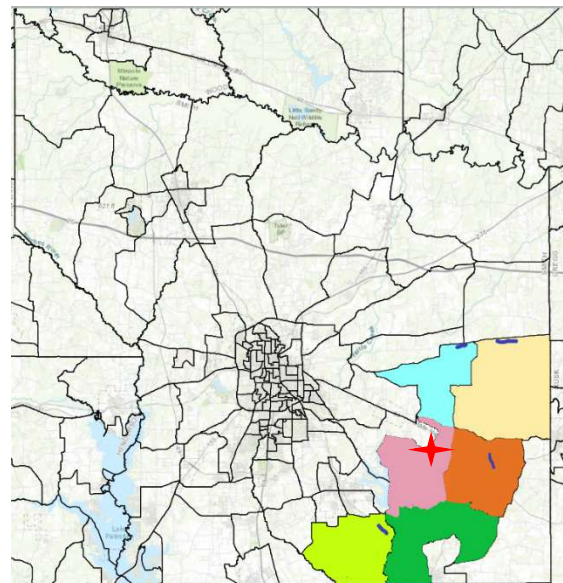
The center point of this project is located in Lindale Texas – observation of the city’s population and development pattern leads to the reasonable conclusion that at least 5,000 persons reside within 1 mile of the center point. The Section 3 Service Area is indicated by the 1-mile circle surrounding the center point of the project.

Example 3b - Project with multiple locations, also in Smith County.



This time, the 1-mile circle does not include 5,000 residents. Therefore, census Block Groups must be used to identify a service area that includes all project locations and a minimum of 5,000 residents.

Census Block Group	LOWMOD UNIV
Block Group 2, Census Tract 22	1720
Block Group 2, Census Tract 21.01	1580
Block Group 1, Census Tract 21.02	2100
Block Group 5, Census Tract 18.01	1030
Block Group 4, Census Tract 18.01	1065
Block Group 3, Census Tract 21.02	1940
Total Service Area	9435



This Section 3 Service Area includes six block groups and exceeds the 5,000 population minimum because all six block groups are needed to encompass all project locations.