



Panhandle

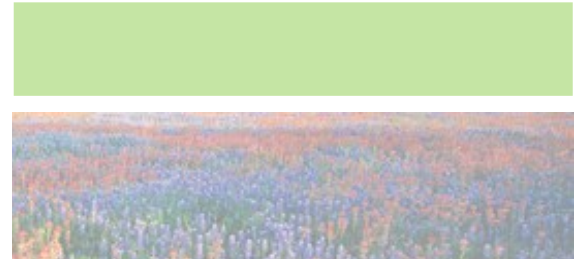


Central-Gulf

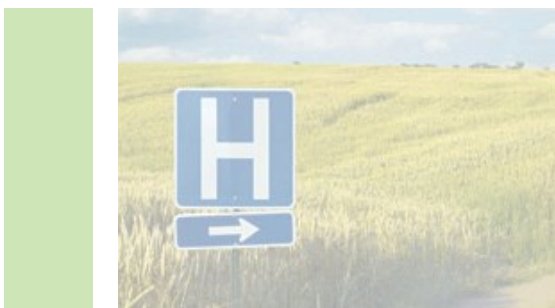
State Office of Rural Health Rural Hospital Funding Resource Guide



East



West



North



South



**State Office of
Rural Health**

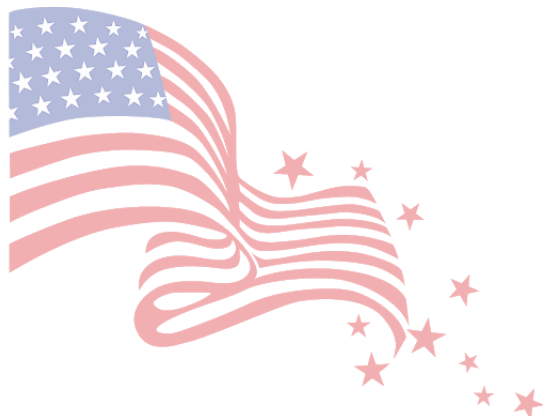
TEXAS DEPARTMENT OF AGRICULTURE
COMMISSIONER SID MILLER

SORH Resource Guide

Table of Contents

Introduction	Page 3
Grant Writing Information	Page 4
Federal Government Funding Sources	Pages 5—8
Texas Government Funding Sources	Page 9
National Private Foundation Funding Sources	Page 10
Texas-wide Private Foundation Funding Sources	Page 11
North Texas Funding Sources	Page 12
Panhandle Funding Sources	Page 13
West Texas Funding Sources	Page 14
South Texas Funding Sources	Page 15
East Texas Funding Sources	Page 16
Central-Gulf Funding Sources	Page 17
Information & Advocacy Resources	Page 18

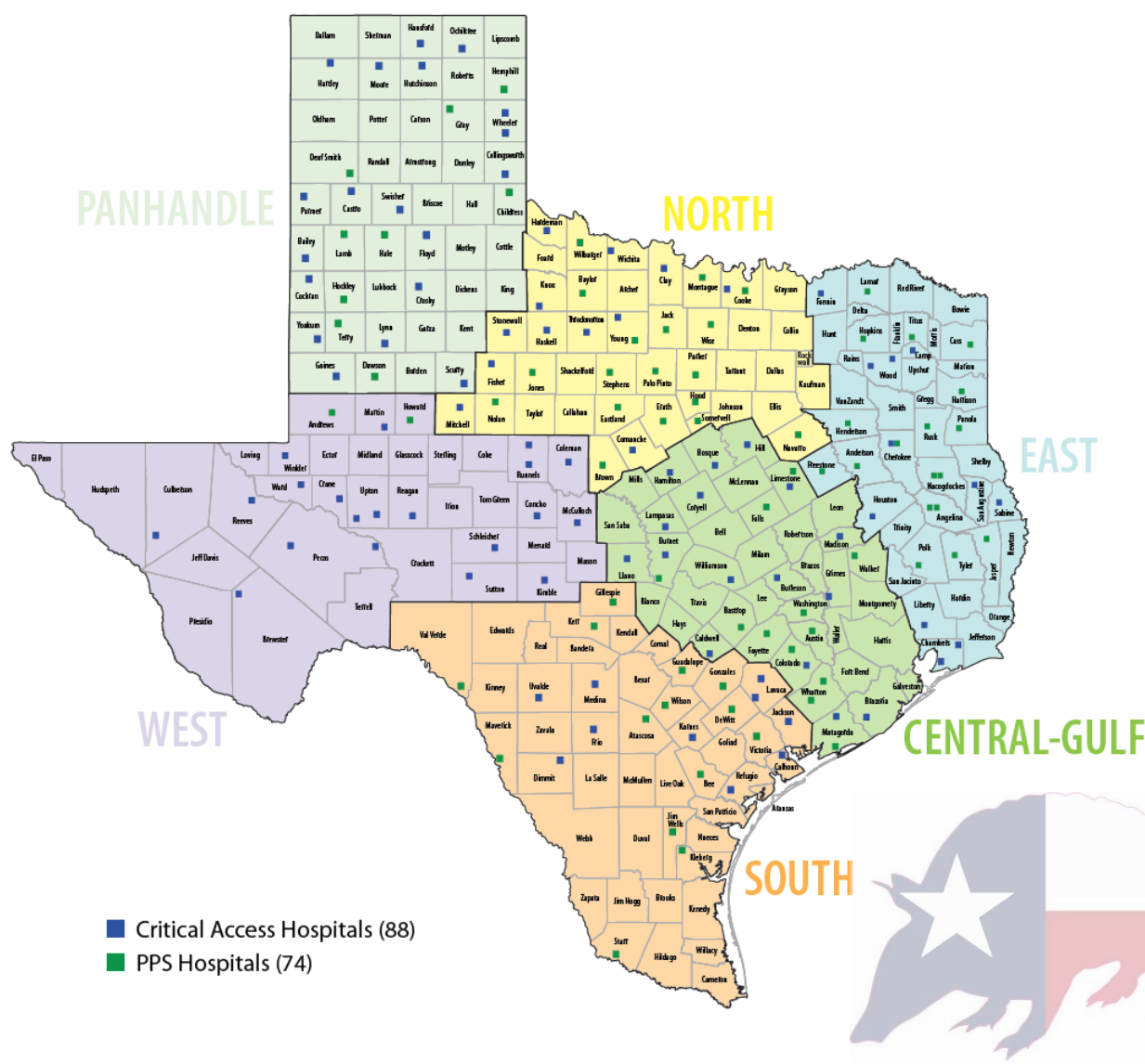
Texas Department of Agriculture
State Office of Rural Health
RuralHealth@TexasAgriculture.gov
512-936-6730



A National to Local Focus

The world of funding resources can be an intimidating one to navigate. Many resources are available on a national, state or local level and it can be challenging to know where to begin. To aid in that challenge the State Office of Rural Health (SORH) has created this funding resource guide for our rural health facilities in order to help them more easily find resources relevant to their needs and geographic area. Resources are listed by: federal, state, national private foundations, Texas private foundations, and regional funding sources. In this guide the regional resources are divided by the SORH office rural hospital-designated regions. (Please see our regional map below).

We have also provided resources about grant writing skills and tips for reviewing funding resource guidelines. All funding resources have been researched and chosen because they fund or have an interest in funding health-related activities. All sources were active at the time of this publication.



Grant Writing Information

GRANTS.GOV — <https://www.grants.gov/web/grants/search-grants.html>

- Grants.gov is an E-Government initiative operating under the governance of the Office of Management and Budget. The office is chartered to deliver a system that provides a centralized location for grant seekers to find and apply for federal funding opportunities. Grants.gov system houses information on over 1,000 grant programs and vets grant applications for federal grant-making agencies. Below are a several federal sites where relevant grants may be available:
 - ◇ **Health Resources & Services Administration (HRSA) Funding Search** — <https://www.hrsa.gov/grants/find-funding> — Find all funding opportunities or only open funding opportunities
 - ◇ **USDA Rural Development Loans and Grants** - <https://www.rd.usda.gov/> - USDA Rural Development is committed to helping improve the economy and quality of life in rural America.
 - ◇ **Substance Abuse and Mental Health Services Administration (SAMHSA)** - <https://www.samhsa.gov/grants> — SAMHSA announces grant funding opportunities through Funding Opportunity Announcements (FOAs). Each FOA contains all the information you need to apply for a grant. To apply for a SAMHSA grant, you must register on [Grants.gov](https://www.samhsa.gov/grants). See below.
- **The System for Award Management (SAM)** - <https://www.sam.gov/SAM/> - To do business with the Federal Government you must have a SAM registration - is an official website of the U.S. government. To register in SAM, at a minimum, you will need the following information:
 - ◇ Your Taxpayer Identification Number (TIN) and Taxpayer Name associated with your TIN. Review your tax documents from the IRS (such as a 1099 or W-2 form) to find your Taxpayer Name.
 - ◇ Your bank's routing number, your bank account number, and your bank account type, i.e. checking or savings, to set up Electronic Funds Transfer (EFT).
 - ◇ DUNS number — <https://fedgov.dnb.com/webform/index.jsp> - Dun & Bradstreet (D&B) provides a D-U-N-S Number, a unique nine digit identification number, for each physical location of your business.
- Texas Health and Human Services—Search the Grants page—<https://apps.hhs.texas.gov/pcs/rfa.cfm>

ASK THESE QUESTIONS WHEN REVIEWING A GRANT PROPOSAL:

- What are the eligibility requirements—i.e applicant tax status, type of applicant allowed, geographic area served?
- What will the program will fund? Review past awards on their website to see what and who has been funded.
- If a state or federal grant, does it have to be approved by a government entity in your state?
- What are the submission periods and deadlines—date and time?
- What are the funding limitations? Does the award amount match your needs? Can you find another grant to supplement?
- Is a letter of intent required prior to applying?
- Are the grant management requirements achievable within your organization?
- What are the grant reporting requirements? Are they manageable for your organization?
- Does the grant notice of funding or application provide support desk emails or phone numbers?
- Are you new to grant writing? If so, conduct online searches for tips on submitting a successful grant, or find a local grant writer with whom you can contract to write the grant.
- Are there limits on number of pages, font style and size, single or double-spaced?
- Is submission online, or is a hard copy required? Most grant applications are now online. If hard copy, how many?

Government Funding—Federal

COVID RELATED FUNDING RESOURCE GUIDES

- **COVID -19 Federal Rural Resource Guide-** https://www.rd.usda.gov/sites/default/files/USDA_COVID-19_Fed_Rural_Resource_Guide.pdf - USDA and its Federal partners have programs that can be used to provide immediate and long-term assistance to rural communities affected by the COVID-19 outbreak. These programs can support recovery efforts for rural residents, businesses, and communities through: technical, training, and management assistance; financial assistance; and state and local assistance.
- **National Rural Health Resource Center—**<https://www.ruralcenter.org/resource-library/covid-19-funding-sources-impacting-rural-providers>—This reference resource is intended to support rural health care providers, along with their state and local partners, navigate the availability of federal funds to support the novel coronavirus (COVID-19) pandemic response and recovery efforts.

ECONOMIC DEVELOPMENT

- **USDA Rural Development Loans and Grants** - <https://www.rd.usda.gov/> - USDA Rural Development is committed to helping improve the economy and quality of life in rural America.
 - **Community Facilities Direct Loan & Grant Program** - <https://www.rd.usda.gov/programs-services/community-facilities-direct-loan-grant-program/> - This program provides affordable funding to develop essential community facilities in rural areas. An essential community facility is defined as a facility that provides an essential service to the local community for the orderly development of the community in a primarily rural area, and does not include private, commercial or business undertakings.
 - **Rural Economic Development Loan and Grant Program (REDL and REDG)** - <https://www.rd.usda.gov/programs-services/rural-economic-development-loan-grant-program> - The Rural Economic Development Loan and Grant program provides funding for rural projects through local utility organizations. USDA provides zero-interest loans to local utilities which they, in turn, pass through to local businesses (ultimate recipients) for projects that will create and retain employment in rural areas. The ultimate recipients repay the lending utility directly. The utility then is responsible for repayment to USDA.
- **Economic Impact Initiative Grants** - <https://www.rd.usda.gov/programs-services/economic-impact-initiative-grants> - This program provides funding to assist in the development of essential community facilities in rural communities with extreme unemployment and severe economic depression. An essential community facility is one that provides an essential service to the local community, is needed for the orderly development of the community, serves a primarily rural area, and does not include private, commercial or business undertakings.
- **HRSA Rural Community Programs** - <https://www.hrsa.gov/rural-health/community/index.html> - The Community-Based Division (CBD) grant programs provide funding to increase access to care in rural communities and to address their unique health care challenges.
- **U.S. Economic Development Administration (EDA) - Public Works and Economic Adjustment Assistance Program** - <https://www.eda.gov/funding-opportunities/> - The EDA's investment policy is designed to establish a foundation for sustainable job growth and the building of durable regional economies throughout the United States. This foundation builds upon two key economic drivers - innovation and regional collaboration. Past projects have included funding for water and wastewater projects in hospitals and healthcare facilities and road infrastructure projects that would support the expansion of healthcare facilities. <https://www.grants.gov/web/grants/view-opportunity.html?oppId=321695>

EDUCATION /TRAINING—Federal continued

- **HRSA Programs:**

- ◇ **Advanced Nursing Education - Sexual Assault Nurse Examiners (ANE-SANE) Program**— <https://www.hrsa.gov/grants/find-funding/hrsa-21-016> - The ANE-SANE program funds advanced nursing education to train and certify Registered Nurses (RNs), Advanced Practice Registered Nurses (APRNs), and Forensic Nurses (FNs) to practice as sexual assault nurse examiners (SANEs). The program aims to increase the supply and distribution of qualified working SANEs and expand access to sexual assault forensic examinations. By expanding access to SANEs, the ANE-SANE program aims to provide better physical and mental health care for survivors of sexual assault and domestic violence leading to better evidence collection and potentially higher prosecution rates.
- ◇ **Advanced Nursing Education Nurse Practitioner Residency Integration Program (ANE-NPRIP)** - <https://www.hrsa.gov/grants/find-funding/hrsa-20-118>—To prepare new Primary Care Nurse Practitioners (NPs) who specialized in adult, family, adult gerontology, certified nurse midwife, pediatric, psychiatric/mental health or women's health to deliver integrated care to rural and underserved populations in primary care community-based health centers.
- ◇ **Nurse Corps Loan Repayment Program**— <https://bhw.hrsa.gov/funding/apply-loan-repayment/nurse-corps> - Loan repayment is available to Registered Nurses (RN) and Advanced Practice Registered Nurses (APRN) working in a public or private eligible Critical Shortage Facility (CSF) OR Nurse Faculty employed at an eligible school of nursing. A Critical Shortage Facility is a health care facility located in, designated as, or serving a primary medical care or mental health Health Professional Shortage Area (HPSA).
- ◇ **Nurse Corps Scholarship Program**—<https://bhw.hrsa.gov/funding/apply-scholarship/nurse-corps> — Nursing students are eligible to receive funding for their training in exchange for working a minimum of two years at an eligible Nurse Corps facility upon graduation.
- ◇ **NHSC Substance Abuse Disorder Treatment and Loan Repayment Program (STAR LRP)**— <https://nhsc.hrsa.gov/loan-repayment/nhsc-sud-workforce-loan-repayment-program.html>— provides loan repayment for individuals working in either a full-time substance use disorder (SUD) treatment job that involves direct patient care in a: county/municipality where the average drug overdose death rate exceeds the most current national average or a Mental Health Professional Shortage Area (MHPSA).
- ◇ **Primary Care Training and Enhancement-Community Prevention and Maternal Health (PCTE-CPMH)** - <https://www.hrsa.gov/grants/find-funding/hrsa-21-014> - The program trains primary care physicians in maternal health care clinical services or population health in order to improve maternal health outcomes. The program will increase the number of primary care physicians trained in public health and general preventive medicine, or trained in enhanced obstetrical care to increase maternal health care expertise and the number of primary care physicians trained in enhanced obstetric care in rural and/or underserved areas.
- ◇ **Rural Health Clinic Technical Assistance Program**— <https://www.hrsa.gov/grants/find-funding/hrsa-21-028> . The purpose of this program is to: Identify key policy issues and knowledge gaps among RHCs about topics including regulatory and program compliance, billing and reimbursement, quality improvement, best practices around disease management and care coordination, and RHC policy priorities; Identify tools, resources and strategies to address policy issues, knowledge gaps and other challenges faced by RHCs; and Inform RHCs and other rural stakeholders about key RHC issues that affect, or have the potential to affect, care delivery.
- ◇ **Rural Residency Planning and Development Program** (from HHS-HRSA) - <https://www.hrsa.gov/grants/find-funding/hrsa-19-088>—The purpose of this grant program is to develop new rural residency programs or Rural Training Tracks (RTT) in family medicine, internal medicine, and psychiatry, to support expansion of the physician workforce in rural areas.

- **Rural Community Health Improvement Program (RCHIP)** - This is a state funded program designed to attract and retain healthcare professionals in rural communities by providing incentives such as stipends or loan repayment assistance through healthcare facilities to non-physician healthcare professionals who agree to practice in rural medically underserved areas.

SUBSTANCE ABUSE/MENTAL HEALTH FUNDING—Federal continued

- **Rural Communities Opioid Response Program (RCORP)** - <https://www.hrsa.gov/grants/find-funding/hrsa-20-031>—RCORP is a multi-year initiative by the Health Resources and Services Administration (HRSA) aimed at reducing the morbidity and mortality of substance use disorder (SUD), including opioid use disorder (OUD), in high risk rural communities. Applicant must be a part of a consortium.
- **U.S. Department of Health & Human Services, SAMHSA** (Substance Abuse and Mental Health Services Administration), <https://www.samhsa.gov/grants/grant-announcements/fg-20-005>, - Rural Emergency Medical Service Training Grant - Eligible applicants are rural emergency medical service agencies operated by a local or tribal government (fire-based and non-fire based) and non-profit emergency medical service agencies.
- **HRSA—Integrated Substance Use Disorder Training Program (ISTP)** - <https://www.hrsa.gov/grants/find-funding/hrsa-21-087> - The program expands the number of nurse practitioners, physician assistants, health service psychologists, and/or social workers trained to provide mental health and substance use disorder (SUD), including opioid use disorder (OUD) services in underserved community-based settings that integrate primary care, mental health, and SUD services.

TELEHEALTH /TECHNOLOGY

- **Health Resources & Services Administration—(HRSA)** <https://www.hrsa.gov/rural-health/telehealth> - Office for the Advancement of Telehealth (OAT) promotes the use of telehealth technologies for health care delivery, education, and health information services.
- **Rural Healthcare Connect Fund—** Through Universal Service Administrative Co. <https://www.usac.org/rural-health-care/healthcare-connect-fund-program/> - Provides assistance to healthcare providers for eligible expenses related to broadband connectivity at a flat discounted rate of 65%. Participants can apply as a member of a consortium or a stand-alone entity.
- **Rural Health Information Hub—** Search the Rural Health Information Hub for technology grants. <https://www.ruralhealthinfo.org/search?q=technology+grants>
- **Telehealth Network Grant Program (TNGP)** - Through HRSA—
<https://grants.hrsa.gov/2010/Web2External/Interface/FundingCycle/ExternalView.aspx?fCycleID=caa3015e-7292-42c3-8e42-9e7c618574cc> - The funding opportunity is aimed towards promoting rural Tele-emergency services with an emphasis on tele-stroke, tele-behavioral health, and Tele-Emergency Medical Services (Tele-EMS).
- **U.S. Department of Agriculture—Rural Development**
 - ◇ **Distance Learning and Telemedicine Grant** - <https://www.rd.usda.gov/programs-services/distance-learning-telemedicine-grants>— this grant helps rural communities use the unique capabilities of telecommunications to connect to each other and to the world, overcoming the effects of remoteness and low population density.
 - ◇ **Rural Energy for America Program (REAP)** - Renewable Energy Systems and Energy Efficiency Improvements Grants and Guaranteed Loans - <https://www.rd.usda.gov/programs-services/rural-energy-america-program-renewable-energy-systems-energy-efficiency> - Funds can be used for the purchase, installation and construction of energy efficiency improvements, such as: High efficiency heating, ventilation and air conditioning systems (HVAC), Insulation, Lighting, Cooling or refrigeration units, Doors and windows, Replacement of energy-inefficient equipment.



ADDITIONAL FEDERAL FUNDING

- **HRSA - Rural Healthcare Provider Transition Project (RHPTP)**—<https://www.hrsa.gov/grants/find-funding/hrsa-20-099> - This cooperative agreement will provide technical assistance (TA) that will assist eligible small rural hospitals and rural health clinics (RHCs) in strengthening their foundation in key elements of value-based care, including, but not limited to quality, efficiency, patient experience, and safety of care.
- **CMS -Emergency Triage, Treat, and Transport (ET3) Model** - <https://innovation.cms.gov/innovation-models/et3>
Emergency Triage, Treat, and Transport (ET3) is a voluntary, five-year payment model that will provide greater flexibility to ambulance care teams to address emergency health care needs of Medicare Fee-for-Service (FFS) beneficiaries following a 911 call. CMS will continue to pay to transport a Medicare FFS beneficiary to a hospital emergency department or other covered destination. In addition, under the model, CMS will pay participants to 1) transport to an alternative destination partner, such as a primary care office, urgent care clinic, or a community mental health center (CMHC), or 2) initiate and facilitate treatment in place with a qualified health care partner, either at the scene of the 911 emergency response or via telehealth.
- **Rural Emergency Medical Services Training Grant-** <https://www.samhsa.gov/grants/grant-announcements/fg-20-005>— From Substance Abuse and Mental Health Services Administration (SAMHSA) - The purpose of this program is to recruit and train emergency medical services (EMS) personnel in rural areas. SAMHSA recognizes the great need for emergency services in rural areas and the critical role EMS personnel serve across the country.



Government Funding—Texas

- **Texas Department of Agriculture**

- ◇ **Community Facilities Direct Loan & Grant Program in Texas** - <https://www.rd.usda.gov/programs-services/community-facilities-direct-loan-grant-program/tx> - This program provides affordable funding to develop essential community facilities in rural areas. An essential community facility is defined as a facility that provides an essential service to the local community for the orderly development of the community in a primarily rural area, and does not include private, commercial or business undertakings.
- ◇ **Rural Economic Development Loan and Grant Program in Texas (REDL and REDG)** - <https://www.rd.usda.gov/programs-services/rural-economic-development-loan-grant-program/tx>—The Rural Economic Development Loan and Grant program provides funding for rural projects through local utility organizations. USDA provides zero-interest loans to local utilities which they, in turn, pass through to local businesses (ultimate recipients) for projects that will create and retain employment in rural areas. The ultimate recipients repay the lending utility directly. The utility then is responsible for repayment to USDA.
- ◇ **Texas Department of Agriculture Fire, Ambulance, and Services Truck (FAST) fund**—[Click here to view the page on the TDA website](#) The Fire, Ambulance, & Service Truck (FAST) Fund provides funds for eligible vehicles to provide emergency response and special services to rural communities.
- ◇ **Texas Capital Fund Infrastructure Development**—[Click here to view the page on the TDA website](#) Sponsored by the Texas Department of Agriculture, this program provides grants for public and private infrastructure improvements that encourage new business development and expansion in rural areas of Texas. Activities must create or retain permanent jobs in primarily rural communities and counties.

- **Texas Health and Human Services Grants**—<https://hhs.texas.gov/doing-business-hhs/grants> - By awarding grants, Texas Health and Human Services makes it possible for program areas and contracted client service providers to pursue new projects and carry out program services and supports that are aligned with the agency's mission and goals. Search the Grants page—<https://apps.hhs.texas.gov/pcs/rfa.cfm>.
- **Texas Area Health Education Centers (AHEC)**— The mission of AHECs is to help its members achieve the mission through advocacy, education, and research. The AHEC mission is to enhance access to quality health care, particularly primary and preventive care, by improving the supply and distribution of healthcare professionals via strategic partnerships with academic programs, communities and professional organizations.

AHECs provide training for Community Health Workers (CHWs) who are frontline public health workers who have a close understanding of the community they serve. This trusting relationship enables them to serve as a liaison/link/intermediary between health/social services and the community to facilitate access to services and improve the quality and cultural competence of service delivery to a community member. See below to find an AHEC in your area.

- South, South Central and South Coastal— <https://stahec.uthscsa.edu/centers/>
- Central, East and North Coastal Texas - <https://www.utmb.edu/ahec>
- West Texas, Panhandle and Northeast Region - <https://www.westtexasahec.org/>



NATIONAL FOUNDATIONS

Aramco Services Company Contributions Program - <https://www.aramcoservices.com/community/>. From partnering with civic associations and community organizations to outreach events designed to improve green space and public education, we are actively involved in improving the communities in which we live and work.

The Archer Foundation - <https://www.thearcherfoundation.org/grant-information2/> - The Foundation funds arts and culture; civic and public Affairs; education; health and human Services. Grants are provided throughout the United States but tries to allocate at least one-third of its grant resources to organizations in the West Texas area. Applications for specific programs or projects, capital projects, and general operations are considered. Phone: 325-942-7642

ConocoPhillips Corporate Giving Program - <http://www.conocophillips.com/sustainability/creating-shared-value/global-giving/local-community-giving/> - charitable investments and volunteerism in support of education, health and safety, the environment, the arts, civic and social services and disaster relief.

The Daisy Foundation – www.daisyfoundation.org - Created to express gratitude and meaningful recognition of nurses. Grants for nurses. up to \$1,500 for medical missions, \$2,000 Evidence Based practice grant, \$5,000 Research grants. Texas Contact Phone: 586-467-2828

Michael and Susan Dell Foundation - <https://www.msdf.org/> - Focus areas are education, health and wellness, and family economic stability. Phone: 512-600-5500, Email: info@msdf.org

Elks National Foundation - <https://www.elks.org/enf/ourgrants.cfm> - The mission of the Elks National Foundation is to help Elks build stronger communities. They fulfill this pledge by investing in communities where Elks live and work. They provide tomorrow's leaders, our youth, with lifelong skills; meet the needs of today's veterans; and fund projects that improve the quality of life in local Elks communities. Phone: 773-755-4790

Emergency Medicine Foundation – www.emfoundation.org - The Foundation's mission is promoting education and research that: develops emergency medicine researchers, improves patient care, provides the basis for effective health policy. Phone: 800-798-1822

The Hearst Foundation <https://www.hearstfdn.org/> - The Foundation assists leading regional hospitals, medical centers and specialized medical institutions providing access to healthcare for high-need populations such as rural, low-income, and veterans. In response to the shortage of healthcare professionals necessary to meet the country's evolving healthcare demands, the Foundations also fund programs designed to enhance skills and increase the number of practitioners and educators across roles in healthcare. The San Francisco office funds grants west of the Mississippi River. Phone: 415-908-4500, Email: hearst.sf@hearstfdn.org

Insperty Corporate Giving - <https://www.insperity.com/corporate-citizenship/> - Five specific areas of focus, including health and human services, education, military and veterans, animal service organizations, environment and conservation. Funds grants, event sponsorships and in-kind donations. Email: corporate.citizenship@insperity.com

Robert E. and Evelyn McKee Foundation – www.mckeefoundation.org – Headquartered in El Paso, Texas, serves across the south including all of Texas. The Foundation provides awards contributions in the following categories: Civic, Cultural and Religion, Education, Literature and Science, Hospitals, Rehabilitation and Welfare, Youth Activities, Community Fund. Phone: 915-581-4025, Email mckeefoundation@att.net

Medical Bridges - <http://www.medicalbridges.org/about/mission-vision-values> - Headquartered in Houston, TX serving USA and International. Purpose is to bridge the healthcare gap worldwide by procuring and distributing medical equipment and supplies to underserved communities. This is not a foundation or grant awarding organization. Phone: 713-748-8131

T. Boone Pickens Foundation - <https://tboonepickensfoundation.org/health-and-medical-research-treatment-and-services/> Focuses on health and medical research, treatment and services; entrepreneurship; kids at risk; education and athletics, with a particular focus on his alma mater, Oklahoma State University; corporate health and fitness; and conservation and wildlife management. *The grant application is by invitation only, through a request for proposal process. See website.*

PRIVATE FOUNDATIONS—ALL TEXAS

Albert & Margaret Alkek Foundation - <https://www.alek.org/grantguidelines.htm> - established to provide support for charitable, religious, scientific, literary and educational organizations and programs serving the people of the State of Texas. Phone: 713-652-6601, email: info@alek.org

BNSF Railway Foundation - <http://www.bnsffoundation.org/> - The Foundation supports organizations and programs that support and improve the general welfare and quality of life in the communities in which BNSF Railway Company operates. The Foundation makes grants to charitable organizations in support of general operating expenses, as well as specific programs, services, and projects. Search BNSF Railway lines to see if a line runs through your geographic area.

Connected Nation - <https://connectednation.org/blog/tag/connected-nation-texas/> – working to expand high-speed internet access to all families, business, and organizations. Phone: 877-846-7710, Email: info@connectednation.org

The Cullen Foundation - <https://cullenfdn.org/grant-guidelines/> - Program areas are cultural, health care, education and public services. Serves all of Texas but with priority for the greater Houston area. Phone: 713-651-8837, Email: gina@cullenfdn.org

Michael and Susan Dell Foundation - <https://www.msdf.org/> - Focus areas are education, health and wellness, and family economic stability. Phone: 512-600-5500, email: info@msdf.org

The Meadows Foundation - <https://www.mfi.org/GrantAppGuide.html> - The Foundation funds in the areas of arts and culture, civic and public affairs, education, health, and human services, with special emphasis on environment, mental health and public education. Applications accepted at any time. Email: WebGrants3003@mfi.org

The Moody Foundation - <https://moodyf.org/moody-foundation-grants/> The Moody Foundation grant categories are arts and humanities, community and social services, health, education, and science. *Service areas:* South: San Antonio, Houston, Galveston, Central: Austin, North: Greater Dallas Area, East: Tyler, Lufkin, West: Lubbock, Abilene. Applications accepted year-round with one-year project funding and multi-year on case by case basis. Phone: Galveston—409-797-1500, Dallas— 866-742-1133

The Ed Rachal Foundation - <https://www.edrachal.org/> - charitable, scientific, literary or educational purposes within the State of Texas. A majority of grants awarded are between \$5,000.00 and \$50,000.00. Phone: 361-881-9040, Email: info@edrachal.org

Texas Physician Education Loan Repayment Program (PELRP) - <http://www.hhloans.com/index.cfm?ObjectID=A85AA8AA-0CD1-EDD4-D9379C7C084059FB>—Texas Physician Education Loan Repayment Program (PELRP) offers loan repayment to physicians who practice in Texas, with priority given to primary care physicians who practice in Health Professional Shortage Areas of the state for 4 years. Phone: 800-242-3062

Texas Rural Funders (TRF) - <https://texasruralfunders.org/> - Made up of private foundations, community foundations, and health-conversion foundations, TRF is dedicated to working with rural communities to develop and implement solutions to the unique challenges they face. Seeking issues that allow funding organizations to contribute to systemic change that can impact the whole state. Three core areas of focus are broadband and digital connectivity, capacity and leadership building, and convening communities, leaders, experts and funders. Email: infor@texasruralfunders.org

Texas Rural Communities Inc. (TRC) - <https://texasrural.org/> - TRC makes grants to fund community programs in rural areas that advance community development, including but not limited to environmental, economic or educational programs for the benefit of rural communities. The average awards have been \$3,700 and will not exceed \$10,000. Phone: 800-787-2589

United Way of Texas - <https://www.uwtexas.org/> United Way organizations often know the local/regional partners and what types of funding might be available in your area. Search the Texas website for the United Way that serves your area.

The Valero Foundation - <https://www.valero.com/en-us/Pages/Valero-Energy-Foundation.aspx> - We seek opportunities to fund nonprofit agencies that serve predominantly disadvantaged children and families. Service areas are basic needs, health care, education and civic endeavors. Phone: 210-345-2000

NORTH REGION

The A&J Family Foundation - <http://fdnweb.org/ajfamily/> - The foundation seeks improved health outcomes in our community through the growth of value-added, Integral Medicine-based healthcare services for medically underserved individuals and families in North Central Texas. Phone: 817-240-3447, Email: davisalank@att.net

Communities Foundation of Texas – www.dftexas.org/nonprofits - Since 1953, Communities Foundation of Texas has been connecting donors with nonprofits in North Texas. CFT helps nonprofits carry out important work by awarding grants, forging community partnerships and educating community philanthropists and partners about the organizations that are most aligned with their charitable interests. Phone: 214-750-4222

The Esping Foundation – www.espingfamilyfoundation.org – The Esping Family Foundation exists to help people and institutions of Dallas, Texas, specifically Dallas County to help themselves and future generations. Under the terms of its charter, the Foundation can distribute grants only to qualified public entities or 501(c)(3) charities serving the people of Texas. The Foundation does not lend or grant money to individuals. Grant categories are: Education, Human Services, Health, Arts and Culture. Phone: 214-849-9808

The King Foundation – <https://www.kingfoundation.com/> - The King Foundation awards two different types of grants each year to organizations from Arkansas, North Texas, and West Texas: Community Grants - Program, Capital, Nonprofit capacity (Arkansas and West Texas only), and Initiative Grants - Serving the rural areas with projects related to broadband access, economic development, healthcare access, and nonprofit capacity and homelessness prevention for youth, veterans and military families. Spring and Fall application cycles. Phone: 214.750.1884, Email: info@kingfoundation.com

The Ninnie L. Baird Foundation - <http://www.ninnielbairdfoundation.com> - Service area primarily north Texas but will fund other areas of Texas. Giving for programs located in Texas that improve the quality of life for women, children and families through family preservation, education, and nutrition. Phone: 972-803-3409. Email - ninnielbairdfoundation@gmail.com

North Texas Community Foundation – www.northtexascf.org – Key areas are child and family wellness, animal welfare, land conservation and their Toolbox Grants Program. Phone: 817-877-0702

North Texas Giving Foundation - www.ntxgivingfoundation.org - The North Texas Community Giving Foundation is dedicated to making an impact in North Texas by supporting local nonprofit organizations who align with the vision of improving the health, education and welfare of the community. Phone: 844-339-6833, Email: ntxcfg@gmail.com

The Priddy Foundation - <https://priddyfdn.org/> - Dedicated to the support of programs in human services, education, the arts, and health, which offer significant potential for individual development and community improvement. Offer funds for programming, operations, capital improvement, and organizational development grants. Serving the following counties: Archer, Baylor, Childress, Clay, Cottle, Foard, Hardeman, Haskell, Jack, King, Knox, Montague, Stonewall, Throckmorton, Wichita, Wilbarger, Wise, and Young. Phone: 940-723-8720

Sid Richardson Foundation – <http://www.sidrichardson.org/grants/guidelines/> The Foundation provides grants to nonprofit organizations in Texas that address education, healthcare, human services, and the arts. Applications for health-related projects are accepted from throughout the state, including rural areas. Phone: 817-336-0494, Email: info@sidrichardson.org

PANHANDLE REGION

Abell-Hanger Foundation - <https://abell-hanger.org/> - The foundation supports Education, Health, Human Services, Public/Society Benefit, Arts, Culture, Humanities and Religion. Service area is the West Texas Region and parts of the Panhandle Region. Phone: 432-684-6655

Amarillo Area Foundation - <https://www.amarilloareafoundation.org/grants/> - The Foundation consists of programs that allow for improving the quality of life with grants in the areas of employment and education; non-profit consulting, education and networking; small business support; UT Harrington Fellowship. Service area is top 26 counties in the Panhandle. Phone: 806-376-4521

David D. and Nona S. Payne Foundation Inc.—<http://davidandnonapaynefoundation.com/>. Grants are made semi-annually in April and October each year. Grants are made primarily in the upper 26 counties of the Panhandle. Phone: 806-665-0063

Permian Basin Area Foundation— <https://pbaf.org/> - Headquartered in Midland, Texas serving the Permian Basin and Trans-Pecos regions. Panhandle counties served are Gaines, Dawson and Borden. For nonprofit organizations supporting the following areas: Health & Social Services, Human Services, Education & Youth Services, Housing & Community Development, Arts & Culture. Phone: 432-617-3213

The Hal and Charlie Peterson Foundation - <https://www.hcpetersonfoundation.org/appprocess.html>. Provides grants for healthcare, education, community improvement and general charity. *Service area:* Kerr, Bandera, Edwards, Gillespie, Kendall, Kimble, and Real Counties. Phone: 830-896-2262, Email: info@hcpetersonfoundation.org

T. Boone Pickens Foundation - <https://tboonepickensfoundation.org/health-and-medical-research-treatment-and-services/> Focuses on health and medical research, treatment and services; entrepreneurship; kids at risk; education and athletics, with a particular focus on his alma mater, Oklahoma State University; corporate health and fitness; and conservation and wildlife management. *The T. Boone Pickens Foundation does not accept unsolicited letters, emails or calls of inquiry. The grant application is by invitation only, through a request for proposal process. Grant recipients must be invited to apply by a member or members of the foundation committee.*



WEST REGION

Abell-Hanger Foundation - <https://abell-hanger.org/> - The foundation supports Education, Health, Human Services, Public/Society Benefit, Arts, Culture, Humanities and Religion. Service area is the West Texas Region and parts of the Panhandle Region. Phone: 432-684-6655

The Archer Foundation - <https://www.thearcherfoundation.org/grant-information2/> - Arts and Culture, Civic and Public Affairs, Education, Health. Human Services. The Foundation provides grants throughout the United States but tries to allocate at least one-third of its grant resources to organizations helping those in the West Texas area. Applications for specific programs or projects, capital projects, and general operations are considered. Phone: 325-942-7642

Betenbough Charitable Foundation, Inc. - <https://www.betenbough.com/our-ministry/giving/> - Betenbough Homes seeks to partner with organizations that are making a difference in their community. Volunteer or financial support to enhance your organization's efforts. Service area: Midland, Odessa and Lubbock. Phone: 877-620-4594

The Community Foundation of the Texas Hill Country - <https://www.communityfoundation.net/> - This is a public charitable foundation that supports nonprofits and local causes in the region. The Community Foundation grants funds to charities and awards scholarships to students throughout the Hill Country. Areas for funding are: Arts & Heritage, Basic Human Needs, Environment, Youth Development. West Texas counties served: Mason and Kimble county. Phone: 830-896-8811

The Community Foundation of West Texas - <https://www.cfwtx.org/> - Through grants and scholarships the CFWTX exists to improve the quality of life for all people in West Texas through the development of organized philanthropy. They monitor all areas of community need - including human services, education, the environment, healthcare, the arts, and economic development. Serves 15 Counties in the South Plains region: Bailey, Cochran, Crosby, Dickens, Floyd, Garza, Hale, Hockley, King, Lamb, Lubbock, Lynn, Motley, Terry, Yoakum. Phone: 806-762-8061

The King Foundation - <https://www.kingfoundation.com/> - The King Foundation awards two different types of grants each year to organizations from Arkansas, North Texas, and West Texas: Community Grants - Program, Capital, Nonprofit capacity (Arkansas and West Texas only), and Initiative Grants - Serving the rural areas with projects related to broadband access, Census 2020 outreach, economic development, healthcare access, and nonprofit capacity and homelessness prevention for youth, veterans and military families. Phone: 214.750.1884, Email: info@kingfoundation.com

Permian Basin Area Foundation - <https://pbaf.org/> - Headquartered in Midland, Texas serving the Permian Basin and Trans-Pecos regions. For nonprofit organizations supporting the following areas: Health & Social Services, Human Services, Education & Youth Services, Housing & Community Development, Arts & Culture. Phone: 432-617-3213

The Hal and Charlie Peterson Foundation - <https://www.hcpetersonfoundation.org/appprocess.html>. Provides grants for healthcare, education, community improvement and general charity. *Service area for the West region is:* Kimble County. Phone: 830-896-2262, email: info@hcpetersonfoundation.org



SOUTH REGION

Alice Kleberg Reynolds (AKR) Foundation - <https://akrfoundation.org/guidelines/> - The AKR Foundation awards grants for arts/culture, charitable, education, literacy, medical and scientific purposes. The Alice Kleberg Reynolds Foundation makes grants to qualified non-profit organizations serving 50 specific counties in south and central Texas. Application period: May 20 – August 27. No contact information. Application online only.

The Behmann Brothers Foundation - <http://behmannbrothersfoundation.org/> - Primary areas of interest are: agricultural research and education, schools, youth groups, healthcare and service organizations. Grants will primarily be made to organizations in the counties of Nueces, Aransas, Bee, Jim Wells, Kleberg, Live Oak, Refugio, and San Patricio. Phone: 361-438-1589, Email: info@behmannbrothersfoundation.org

The Community Foundation of the Texas Hill Country - <https://www.communityfoundation.net/> - Areas for funding are: Arts & Heritage, Basic Human Needs, Environment, Youth Development. South Texas counties served are: Bandera, Blanco, Edwards, Gillespie, Kendall, Kerr, Real and Uvalde. Phone: 830-896-8811

The Ewing Halsell Foundation - <https://www.ewinghalsell.org/> - The foundation has supported the arts, educational enterprises from institutions of higher learning to after school programs, environment, conservation, faith, health and human services, biomedical sciences, research and many other in San Antonio and South Texas. One grant application from an organization in a 12-month period. Phone: 210-223-2649, Email: Jackie@ewinghalsell.org

Kronosky Charitable Foundation - <https://kronkosky.org/> - Key program areas Health and Human Services, Arts and Culture, animal welfare, and victims of public disasters in Texas. Serving Bandera, Bexar, Comal, Kendall counties. Phone: 210-475-9000 or 210-354-2204, Email: kronfndn@kronkosky.org

Laura Jane Musser Fund: Rural Initiative Program - <https://musserfund.org/> - Funding areas are rural, environmental and intercultural harmony. Eligible counties in the Rio Grande River Valley are: Cameron, Hidalgo, Starr, and Willacy counties. The applicant community must have a population of 10,000 or less and must be able to demonstrate rural characteristics of their location. Phone: 612-825-2024, Email: admin@musserfund.org

The Najim Charitable Foundation—<http://najimfoundation.org/index.php>— specific focus of the Foundation is providing children (primarily infants thru age eighteen) with food and shelter, clothing, education, medical treatment, and other children's charitable purposes. *Service area:* Bexar, Atascosa, Bandera, Comal, Guadalupe, Kendall, Medina, and Wilson counties. Phone: 210-255-8435

The Hal and Charlie Peterson Foundation - <https://www.hcpetersonfoundation.org/appprocess.html>. Provides grants for healthcare, education, community improvement and general charity. *Service area for the South Region is:* Kerr, Bandera, Edwards, Gillespie, Kendall, and Real Counties. Phone: 830-896-2262, email: info@hcpetersonfoundation.org

San Angelo Area Foundation, <https://www.saafound.org/grantseekers> - Funds the following areas: animals, arts & culture, education, elderly, environment, health, social services, and youth. *Service area is:* Tom Green, Crockett, Sutton, Kimble, Mason, Menard, Schleicher, Reagan, Irion, Concho, McCulloch, Runnels, Coke, Llano, San Saba, Glasscock, and Sterling. Phone: 325-947-7071, email: infosaaaf@saafound.org

San Antonio Area Foundation— <https://saafdn.org/> - Providing scholarships, grants and executive leadership programs to the following counties: Atascosa, Bandera, Comal, Guadalupe, Kendall, Medina and Wilson counties. Supports nonprofits through grants, strengthens nonprofits through a variety of capacity building services and sustains organizations with financial tools. Phone: 210-225-2243, Email: info@saafdn.org

EAST REGION

The Brown Foundation – <http://www.brownfoundation.org/> - The Brown Foundation makes grants across a variety of program areas including: education, arts and culture, civic assets, human services and healthcare. Will consider various types of funding requests, including operating, program, and capital support. Primary focus is in the Houston area, but will consider nearby areas. Phone: 713-523-6867, Email: bfi@brownfoundation.org

East Texas Communities Foundation – <https://etcf.org/> - East Texas Communities Foundation is a collection of funding opportunities committed to supporting an array of funding that serve the diverse needs of their communities. The funding areas include but are not limited to: nursing, music, education, libraries, public charities, literacy, scientific, etc. Phone: 903-533-0208

Episcopal Health Foundation - <https://episcopalhealth.org> - Established to support the nursing education in East Texas. Requests may be for special projects, equipment, technology, supplies, etc. Grants for administrative costs are discouraged. Institutions must be located in one of the following East Texas counties: Anderson, Angelina, Bowie, Camp, Cass, Cherokee, Delta, Franklin, Freestone, Gregg, Harrison, Henderson, Hopkins, Houston, Lamar, Leon, Marion, Morris, Nacogdoches, Panola, Rains, Red River, Rusk, Sabine, San Augustine, Shelby, Smith, Titus, Trinity, Upshur, Van Zandt, Wood. Phone: 713-225-0900, Email: info@episcopalhealth.org

Laura Jane Musser Fund: Rural Initiative Program - <https://musserfund.org/> - Funding areas are rural, environmental and intercultural harmony. Eligible counties in east Texas are: Angelina, Houston, Jasper, Nacogdoches, Newton, Polk, Sabine, San Augustine, San Jacinto, Shelby, Trinity, and Tyler. The applicant community must have a population of 10,000 or less and must be able to demonstrate rural characteristics of their location. Phone: 612-825-2024, Email: admin@musserfund.org

T.L.L. Temple Foundation - <http://tltemple.foundation/how-to-apply/> - Six program areas: Education, Economic Development and Community Revitalization, Health, Human Services, Arts and Culture, and Environment and Conservation. The foundation awards funding for multiple purposes, including general operating support, project support, capital improvements, and organizational development and capacity building in the following east Texas counties: Anderson, Angelina, Bowie, Cass, Cherokee, Hardin, Houston, Jasper, Jefferson, Liberty, Nacogdoches, Newton, Orange, Panola, Polk, Rusk, Sabine, San Augustine, San Jacinto, Shelby, Trinity, Tyler. Phone: 936-634-3900

CENTRAL GULF REGION

The Brown Foundation – <http://www.brownfoundation.org/> Houston focus, but will consider nearby areas - The Brown Foundation makes grants across a variety of program areas including: education, arts and culture, civic assets, human services and healthcare. Will consider various types of funding requests, including operating, program, and capital support. The Foundation typically does not make grants in support of endowments or endowment campaigns. Phone: 713-523-6867, Email: bfi@brownfoundation.org

The Community Foundation of Brazoria County - <https://cfbr.org/> - Grants and scholarships available to organizations in Brazoria County for Health and Human Services, Women and Children programs, and other community programs and projects. Organizations must have 501 (c) 3 status or be sponsored by an organization which does. Program or Project must clearly benefit citizens of Brazoria County. Phone: 979-848-2628 , Email: cfbr@sbcglobal.net

The Community Foundation of the Texas Hill Country - <https://www.communityfoundation.net/> - serves 10 Central Texas counties: Bandera, Blanco, Edwards, Gillespie, Kendall, Kerr, Kimble, Mason, Real and Uvalde. Areas for funding are: Arts & Heritage, Basic Human Needs, Environment, Youth Development, scholarships. Phone: 830-896-8811

George and Mary Josephine Hamman Foundation - <http://hammanfoundation.org/> - The Foundation was established to give assistance to students in the pursuit of higher education through scholarships; to promote the arts; to fund qualified institutions in the furtherance and development of scientific projects; to aid churches, associations and conventions of churches in the advancement of religion; to aid colleges and universities in both operating and capital needs; to provide aid for the needy; and to assist hospitals, medical colleges and research institutions for the study, treatment and cure of disease. Phone: 713-522-9891, Email: HammanFdn@AOL.com

Laura Jane Musser Fund: Rural Initiative Program - <https://musserfund.org/> Funding areas are rural, environmental and intercultural harmony. Eligible counties in Brazos Valley area are: Brazos Valley Brazos, Burleson, Grimes, Leon, Madison, Robertson, and Washington counties. The applicant community must have a population of 10,000 or less and must be able to demonstrate rural characteristics of their location. Phone: 612-825-2024, Email: admin@musserfund.org

Alice Kleberg Reynolds (AKR) Foundation - <https://akrfoundation.org/guidelines/> - The AKR Foundation awards grants for arts/culture, charitable, education, literacy, medical and scientific purposes. Grants are made to qualified non-profit organizations serving 50 specific counties in south and central Texas. Application period: May 20 – August 27. No contact information. Application only.

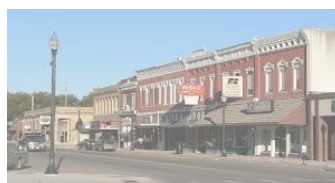
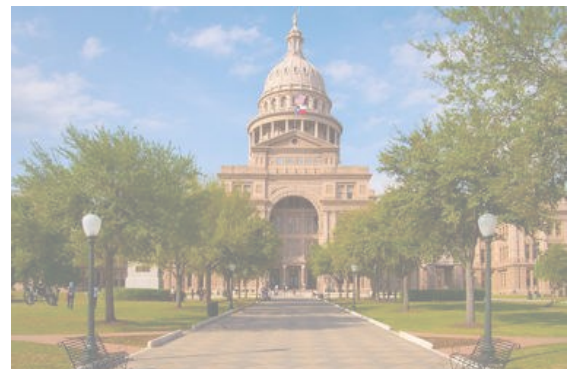
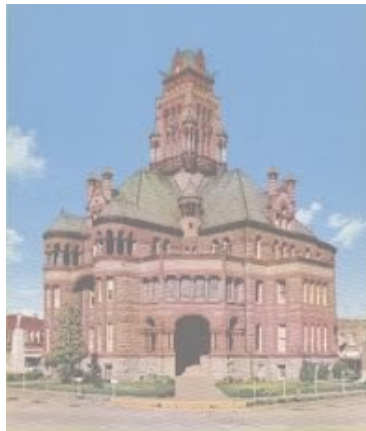
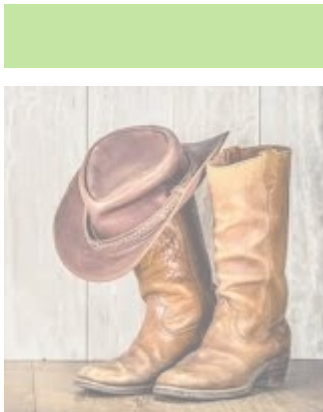
St. David's Foundation – <https://stdavidsfoundation.org/> - The Foundation strives to improve the health of the community through programmatic grants, and capital and non-recurring grants. Areas of interest are children 0-5, women and girls reproductive health, Medicaid age adults, rural communities, clinics. Service area includes: Bastrop, Caldwell, Hays, Travis and Williamson. Phone: 512-879-6600, Email: grantsinfo@stdavidsfoundation.org



National and State Advocacy & Information Resources Devoted to Rural Health

- ◆ **Federal Office of Rural Health**—<https://www.hrsa.gov/rural-health/index.html> - The Federal Office of Rural Health Policy (FORHP) advises the Secretary of the U.S. Department of Health and Human Services on health care issues impacting rural communities, including:
 - Access to quality health care and health professionals;
 - Viability of rural hospitals; and
 - Effect of the Department’s proposed rules and regulations, including Medicare and Medicaid, on access to and financing of health care in rural areas.
- ◆ **HRSA Health Center Program Requirements**—<https://bphc.hrsa.gov/about/index.html>. Information for health centers on program requirements, quality improvement, program opportunities, data, etc.
- ◆ **National Rural Health Association** - <https://www.ruralhealthweb.org/> - The National Rural Health Association (NRHA) is a national nonprofit membership organization with more than 21,000 members. The association’s mission is to provide leadership on rural health issues through advocacy, communications, education and research.
- ◆ **Rural Health Information Hub** - <https://www.ruralhealthinfo.org/funding/3728> -The Rural Health Care Coordination Program provides funding for rural health consortiums working to improve access and quality of care through care coordination strategies.
- ◆ **Rural Policy Research Institute** - <https://rupri.org/> - is a national policy research organization with a mission to: (1) undertake unbiased research and analysis on the challenges, needs, and opportunities facing rural America; (2) improve the understanding of the impacts of public policies and programs on rural people and places, using original research and policy analysis; and (3) facilitate dialogue and collaboration among the diverse community, policy, practice, and research interests focused on a sustainable rural America.
- ◆ **Texas Hospital Association (THA)** - <https://www.tha.org/> - Serving Texas hospitals as the trusted source and unified voice to influence excellence in health care for all Texans.
- ◆ **Texas Medical Association (TMA)** - <https://www.texmed.org/> - The Texas Medical Association, the nation’s largest and one of the oldest state medical societies, is the voice of more than 53,000 physician and medical student members across the state committed to improving the health of all Texans. In partnership with 110 county medical societies, TMA physicians have been setting high professional and ethical standards since 1853.
- ◆ **Texas Medical Foundation (TMF)** - <https://tmf.org/> - TMF helps government agencies and other organizations accomplish the goals of better health care, better health for people and communities, and affordable care. As health care quality improvement experts, they can assist physician practices, health systems and other health care providers in transforming care delivery and improving health outcomes. TMF’s programs and services—ranging from quality improvement consulting and technical assistance to research, data analysis and medical review—engage all aspects of health care.
- ◆ **Texas Organization of Rural and Community Hospitals (TORCH)** - <https://www.torchnet.org/> - TORCH is an organization of rural and community hospitals, corporations and interested individuals working together to address the special needs and issues of rural and community hospitals, staff and patients they serve.





Texas Department of Agriculture
The State Office of Rural Health
RuralHealth@TexasAgriculture.gov, 512-936-6730