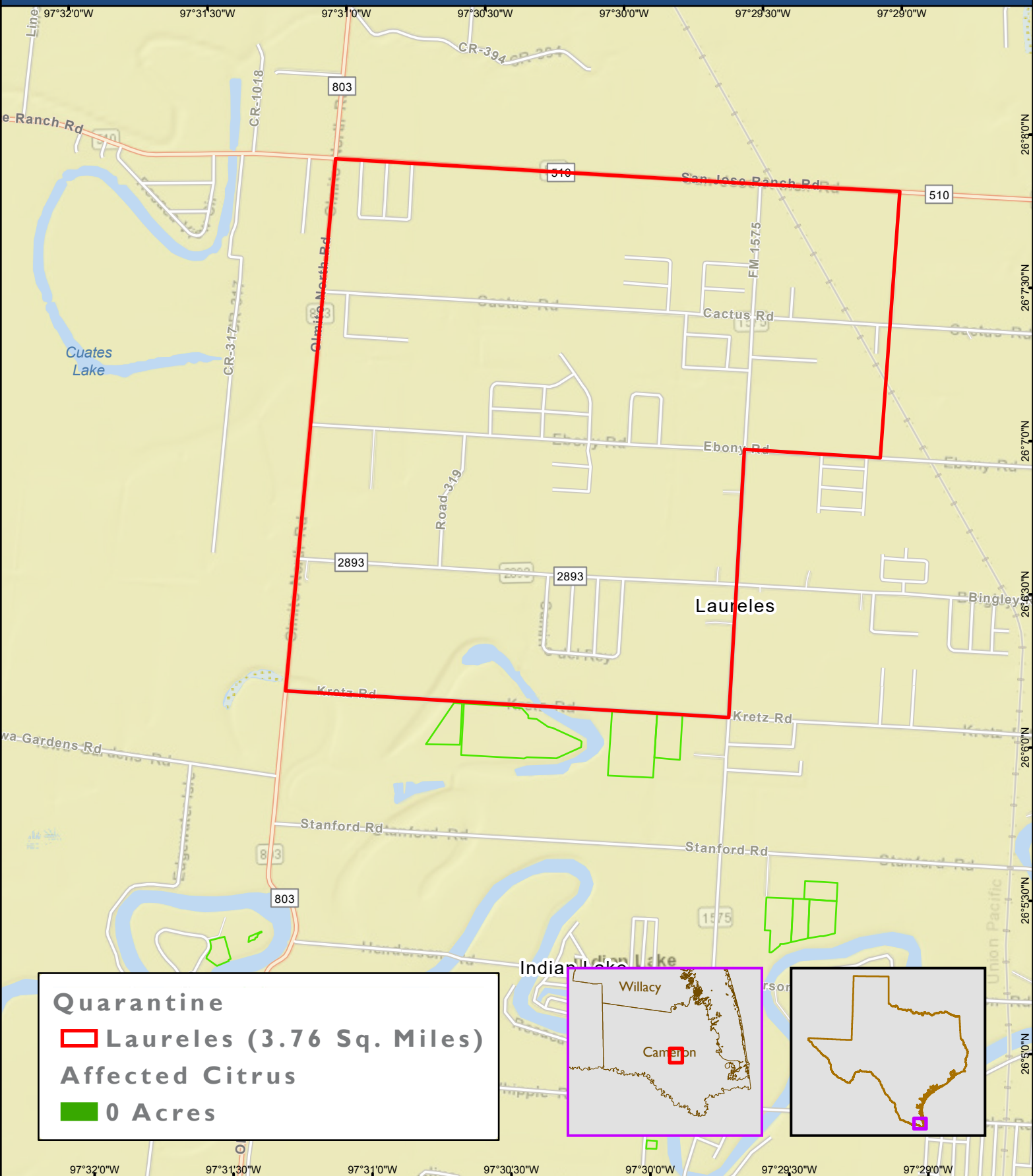
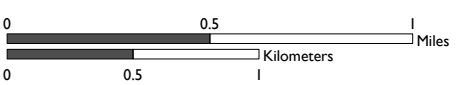
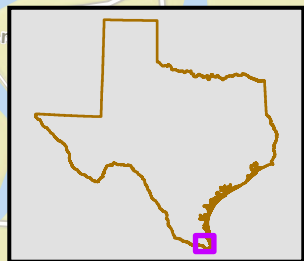
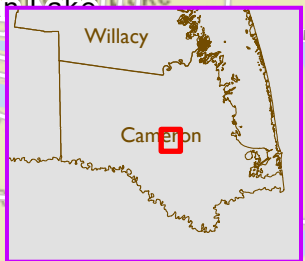


Laureles Citrus Canker Quarantine, Cameron County, Texas



Quarantine
▭ **Laureles (3.76 Sq. Miles)**
Affected Citrus
▭ **0 Acres**



1:30,000

Data Source:
Texas MXFF

Date Created:
12/8/2020
Time Created:
10:03 AM

USDA APHIS PPQ
903 San Jacinto Blvd.
Suite 270
Austin, TX 78701

These data, and all the information contained therein, have been collected by the U.S. Department of Agriculture's Animal and Plant Health Inspection Service (APHIS), or by its cooperators on APHIS' behalf, for restricted government purposes only and is the sole property of APHIS. See full disclaimer here: aphis.usda.gov/help/map-disclaimer